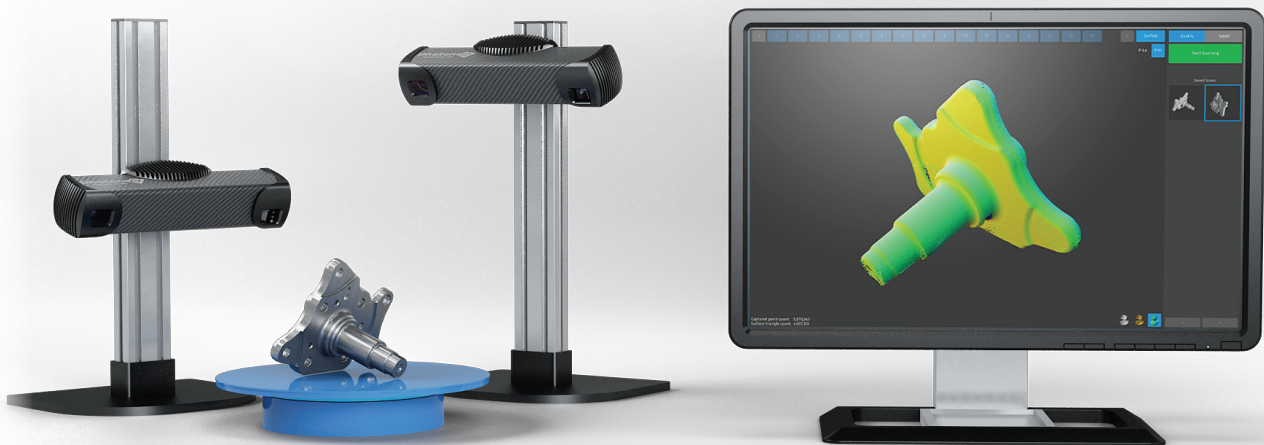
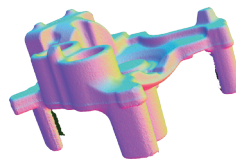


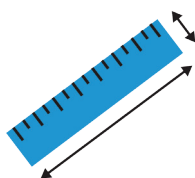
Automated 3D model creation



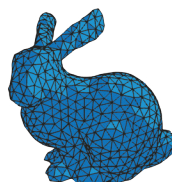
Fast one-click solution for any kind of objects



Applications



Inspection &
metrology



3D modeling
& reconstruction



Reverse
engineering

Fast and easy automated 3D model creation

Available solutions

Rotary table package

- ▶ Object size up to 25 x 25 x 15 cm
- ▶ Smallest feature detection ~ 0,2 mm
- ▶ Accuracy from 50 um
- ▶ Fast model creation in 1-2 minutes
- ▶ Package includes
 - 2 pcs of PhoXi 3D Scanner S
 - Construction with a rotary table
 - PC (optional)
 - Calibration plate

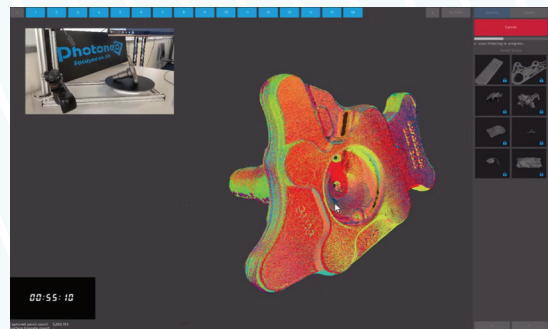
Custom solutions

- ▶ PhoXi 3D Scanners model S, M, L
- ▶ Custom size of the rotary table
- ▶ Any number of scanners
- ▶ Scanner mounted on a robot
- ▶ Scanner and software setup to meet specific needs
- ▶ Integration support

Benefits

- ▶ Output formats: PLY, STL
 - 3D printers
 - Inspection softwares
- ▶ High-quality scan by PhoXi 3D Scanners
- ▶ Superior global scan alignment
- ▶ Robust reflection removal
- ▶ Easy one-click operation
- ▶ Possibility to use also as a C++ Library for custom integrations

See it in action



photoneo.com/meshing



Address:

Photoneo s. r. o.
Plynárenská 1
821 09 Bratislava
Slovakia

Contact:

sales@photoneo.com
+421 948 766 479